

**CREDIT OPINION**

28 June 2024

Update



**RATINGS**

**Alfa Transmisora de Energia S.A.**

Domicile	Chile
Long Term Rating	Baa3
Type	Senior Secured - Fgn Curr
Outlook	Stable

Please see the [ratings section](#) at the end of this report for more information. The ratings and outlook shown reflect information as of the publication date.

**Contacts**

Cristiane Spercel +55.11.3043.7333  
Senior Vice President/Manager  
cristiane.spercel@moodys.com

Daniela Cuan +54.11.5129.2617  
VP-Senior Analyst  
daniela.cuan@moodys.com

Philipp Toculescu +54.11.5129.2644  
Analyst  
philipp.toculescu@moodys.com

» Contacts continued on last page

**CLIENT SERVICES**

Americas 1-212-553-1653  
Asia Pacific 852-3551-3077  
Japan 81-3-5408-4100  
EMEA 44-20-7772-5454

**Alfa Transmisora de Energia S.A.**

Credit opinion

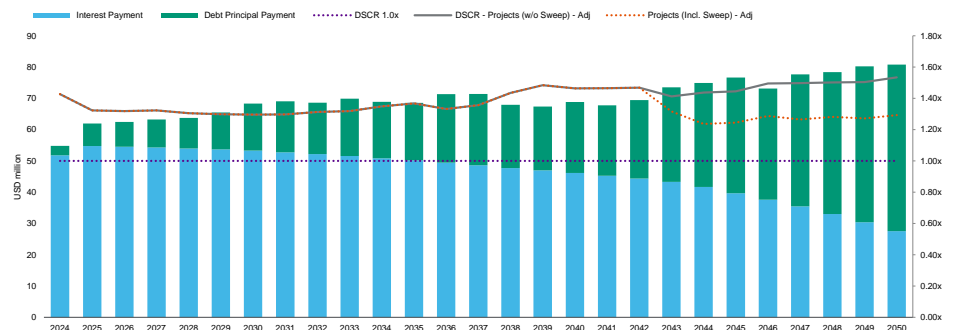
**Summary**

The credit profile reflects the project's diversified portfolio of transmission assets with low operating risk, as evidenced by the historically high availability ratios, low capital reinvestment needs and our expectation of continued good performance under Celeo's management.

The credit profile recognizes that the project is entitled to receive predictable availability-based revenues during a greater part of the 30-year transaction life. However, it also considers the refinancing risk embedded in the transaction, given that debt is not fully amortizing by the notes contractual maturity (50% balloon and a cash sweep mechanism aimed to reduce the balloon to 40%). The large refinancing risk in the long term and back-loaded amortization profile justify a notch down on structural features.

The rating is constrained by the project's high leverage, currently yielding an average DSCR of 1.4 times over the life of the transaction. High leverage is balanced by the creditor protections embedded in the transaction, including a security package that includes first-priority pledges over the project's material assets and shares of the issuer, debt service and operating maintenance (O&M) reserves, limitations on additional indebtedness, dividend restrictions and a well-defined cash waterfall that prioritizes the notes' repayment.

Exhibit 1  
**DSCR is expected to average 1.4x in the legal amortization scenario**



Source: Alfa Transmisora de Energia S.A. and Moody's Ratings

## Credit strengths

- » Strong asset features
- » Good cash flow visibility
- » Supportive regulatory environment
- » Solid operating track record of acquired assets & experienced operator

## Credit challenges

- » High Leverage
- » Repricing and recontracting risks at dedicated contracts' maturity
- » Refinancing risk

## Rating outlook

The outlook is stable, reflecting our expectation of sound operations and visible and stable cash flows derived from predictable regulated and contractual revenues that will provide an average DSCR of 1.25 times over at least the first 10 years of the transaction.

## Factors that could lead to an upgrade

Given the stable outlook and expected stability of revenues coupled with high initial debt levels, the back-loaded debt amortization profile and refinancing risk, an upgrade of the ratings is unlikely in the near term. However better than expected performance of the assets' cash flows leading to an average DSCR consistently above 1.40 times could lead to an upgrade of the ratings.

## Factors that could lead to a downgrade

Downgrade pressure on the ratings could emerge if the operating performance of the assets or its cash flow generation capacity, either from higher than expected expenses, lower contracted revenues or an unexpected adverse change in the regulatory framework for transmission companies, are below expectations such that the average DSCR is below 1.20 times.

## Issuer & Transaction Profile

Alfa Trasmisora de Energia S.A. ("Alfa", the Issuer) is a special purpose entity incorporated to acquire a portfolio of transmission assets in Chile from Colbun S.A. (Colbun Transmision S.A.). The transaction price was \$1,172.5 million; the acquisition was financed by the issuer through the issuance of a senior secured bond that matures in 2051 for an amount of \$1,098.6 million.

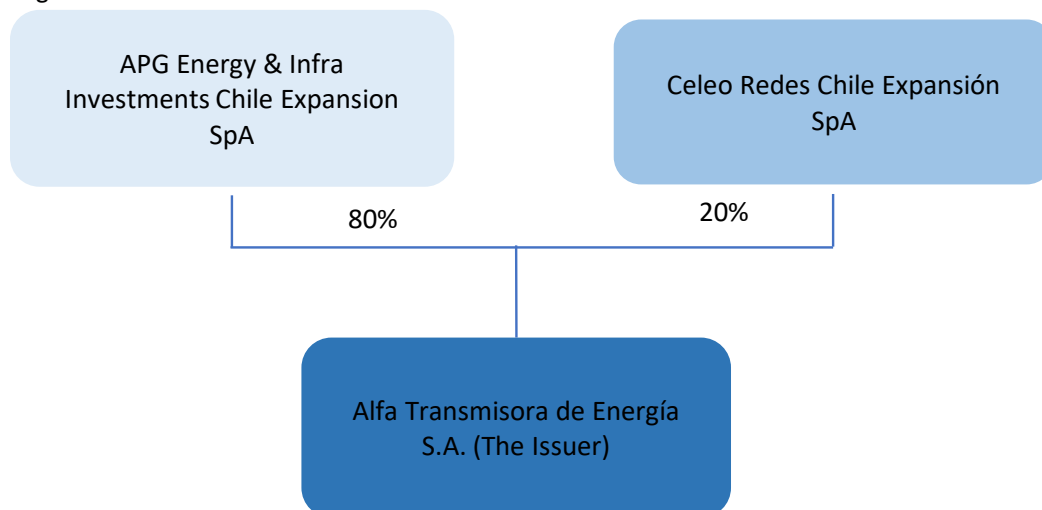
Alfa Trasmisora de Energia S.A. is fully owned by APG Energy & Infra Investments Chile Expansion SpA (80%, wholly-owned by APG) and Celeo Redes Chile Expansión SpA (20%). Elecnor SA indirectly owns 51% of Celeo Redes while APG owns the remaining 49%.

APG was established in the Netherlands and is one of the largest pension funds with global footprint and approximately 537 billion euros assets under management. Nearly 75% of the portfolio allocation is on cross border investments, with some concentration on developed and emerging market equities. In September 2014, APG acquired a 49% stake of Celeo Redes, S.L. (co-owned by Elecnor with 51%) to increase its exposure to the Latin American Transmission sector.

Celeo Redes is headquartered in Spain; the company was formed in 2011 through the consolidation of all Elecnor's transmission activity that had been operational since 2002. The company has operations in Chile and Brazil, where it developed a robust track record in the development and operation of major transmission projects with an asset base estimated in over USD 2 billion.

This publication does not announce a credit rating action. For any credit ratings referenced in this publication, please see the issuer/deal page on <https://ratings.moody's.com> for the most updated credit rating action information and rating history.

Exhibit 2

**Organizational Structure**

Source: Alfa Transmisora de Energía S.A. Offering Memorandum

Alfa's transmission assets are well diversified within the Chilean territory, serving the metropolitan region of Santiago where approximately 74% of the population lives. Most of the assets are in operations and have a robust track record evidenced by average availability levels of above 99%. O&M will be performed by Celeo Redes Chile Limitada, a fully owned subsidiary of Celeo Redes (unrated) with over 10 years' worth of experience in conducting similar works in Chile for a separate transmission line portfolio.

The amortization schedule has been originally designed to target a minimum DSCR of 1.20x, stepping up to a minimum of 1.35x for the portion of regulated revenues subject to tariff reviews and to 1.40x for the dedicated contracts after the renewal period.

The project benefits from the project finance features embedded in the transaction, including six-month debt service reserve account and a three-month O&M reserve account backed by a letter of credit (LC); restrictions on business activities and M&A; a security package that benefits senior creditors, with first-priority pledges over material assets, accounts and insurance; a distribution test subject to DSCR of 1.15x; limitations on additional indebtedness and; a well-defined onshore and offshore cash waterfall that prioritizes the notes repayment.

### Recent Events

On June 25, 2024 -- Moody's Ratings (Moody's) has affirmed Alfa Transmisora de Energía S.A.'s Baa3 rating on the company's 2051 senior secured notes (original notes), following the company's issuance of an additional UF (unidades de fomento) debt issuance for the equivalent of \$131 million senior secured notes in the Chilean market. The company will use the proceeds from the additional notes to repay a loan provided by its shareholders, which was incurred for the payment of an adjustment to the company's purchase price resulting from the actualization of the regulated tariff it will receive that was pending at the time of the original notes' issuance to pay for the acquisition of the assets and to pay for the acquisition of an additional asset (Transquillota).

The rating's affirmation considered that the issuance of additional debt has no impact on the project's credit metrics because it is fully compensated by the additional revenues resulting from a) higher than anticipated regulated revenues from the tariff Review, b) additional revenues from the acquired asset (Transquillota) and c) higher revenues resulting from indexation of tariffs in both US Dollars and Chilean pesos.

## Detailed credit considerations

### Strong assets features with no material construction risk and pre-funded pending investments

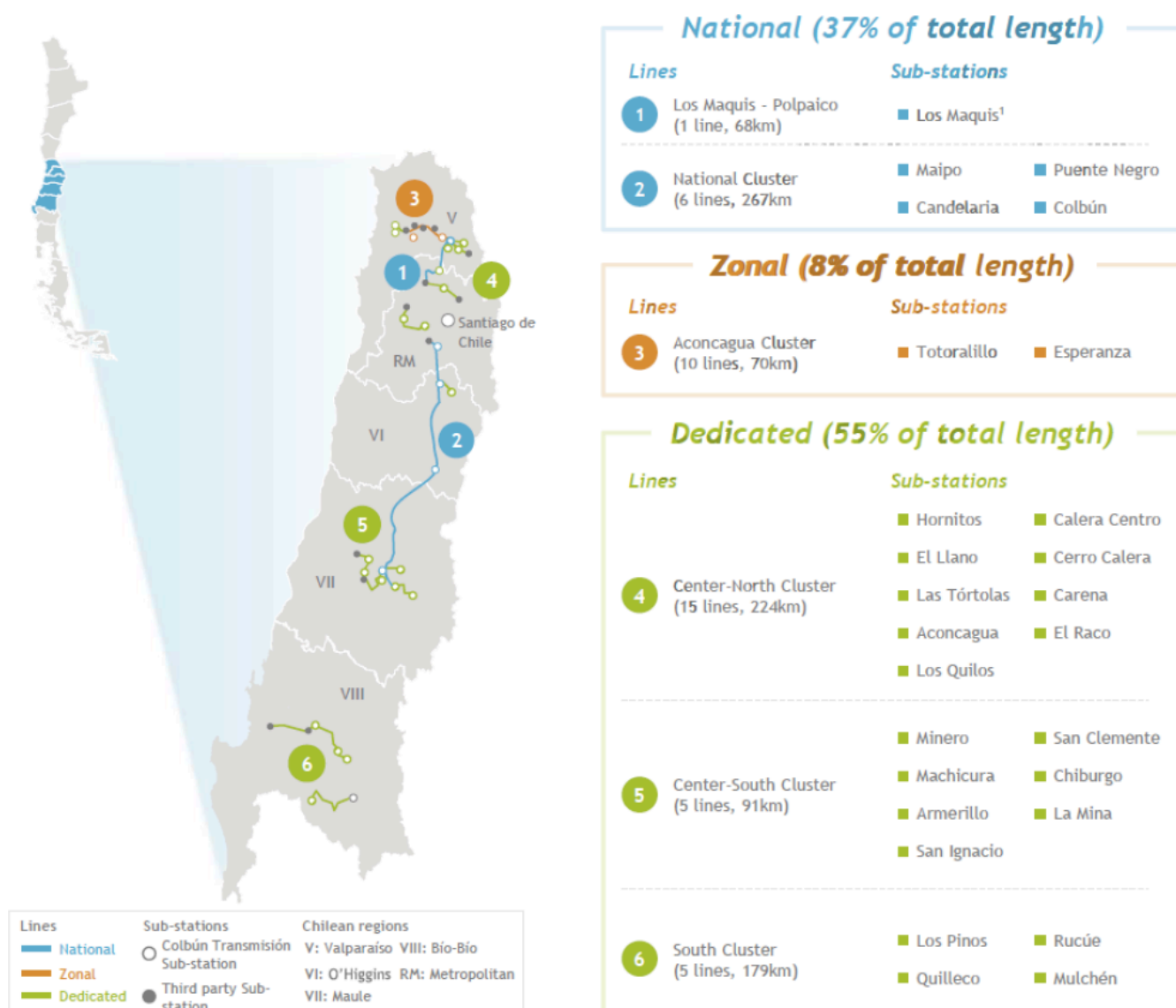
The company's assets consist of a portfolio of operating electric transmission assets in Chile and associated expansion projects. In total, the portfolio consists of 932 km of national, zonal and dedicated transmission lines and 29 substations, distributed along 5 regions in Chile.

The portfolio consists of relatively young assets, with less than 30 years of operations, except for a few km of zonal 44 kV lines that are older. In general, major substation and transmission line equipments typically have useful lives of between 40 years and 60 years, if properly maintained and operated, which is our expectation under Celeo's operation.

The portfolio of transmission assets is part of the Sistema Eléctrico Nacional (SEN), the largest sub-system which accounts for 99% of the country's generation capacity and serves 98% of the population. The regulation divides the transmission network into three categories: the dedicated, the national and the zonal systems.

Exhibit 3

### Asset's Location



Source: Alfa Transmisora de Energia S.A.

As Chile's electricity demand continues to grow and renewable projects are built, there will be continued requirements for expanding the existing transmission infrastructure. Alfa Transmisora has participated in tenders to grow its asset base through expansions, some of which are still underway within the project. Debt documentation limits further expansion works beyond those mandated by the regulator. While there is no maximum capital spending budget limit for these mandated expansions, by regulatory definition they must be critical for the system, and in practice generally below USD 20 million of investments. Any potential mandatory regulated investment in the national or zonal system will be fully recovered by the tariff mechanism applicable to regulated assets.

The capital spending plan included an initial maintenance capex cycle and still the pending expansion capex to be executed until 2025 amounting to around USD 26.2 million and supported by a LC, with no recourse to the project. Upon completion of these projects, the expansion assets will be categorized as regulated national or zonal projects and be subject to a regulated tariff (regulated return on the investment).

### Supportive regulatory framework, still evolving

We view that the Chilean regulatory framework is developing; however, the gradual implementation and approach to asset remuneration remains constructive and aligned to Chile's predictable regulation for public services. Despite social tensions in the country, that led among other measures to the temporary suspension of electricity tariff's indexation, we take comfort from the country's solid institutional framework that provides for a long track record of adequate return on private investments.

Regulation for transmission has been in place since 2006, with some subsequent changes introduced by the New Transmission Law of 2016. Main changes introduced by the new law refer to the redefinition of the transmission system components (national, zonal, dedicated), changes to the planning for the growth of the system, payment allocation mechanism and changes in the rate of return, among others. All these changes were largely expected, broadly discussed and implemented gradually and there is no evidence of any unexpected adverse change in the future. The presence of an independent panel of experts in most of the regulatory studies and decisions or in cases of discrepancies (in the setting of the final tariffs for example) guarantees additional independence of regulatory decisions. Furthermore, there is long track record of adequate compensation mechanisms for capital investments and inflation pass-through on operating costs and expenses. For example, inflation adjustment of regulated tariffs was suspended by the price stabilization mechanism since the end of 2019, however the missing indexation was accumulated until the new tariffs (2020-23 cycle) were enacted after a significant delay in February 2023, but the new tariff was retroactively applied from January 2020 onwards. Given the lengthy review process in the previous tariff cycle, is our expectation that the next one (2024-2027) is also experiencing delays but the recent conclusion of the previous tariff studies would make the delay shorter than that in the previous period.

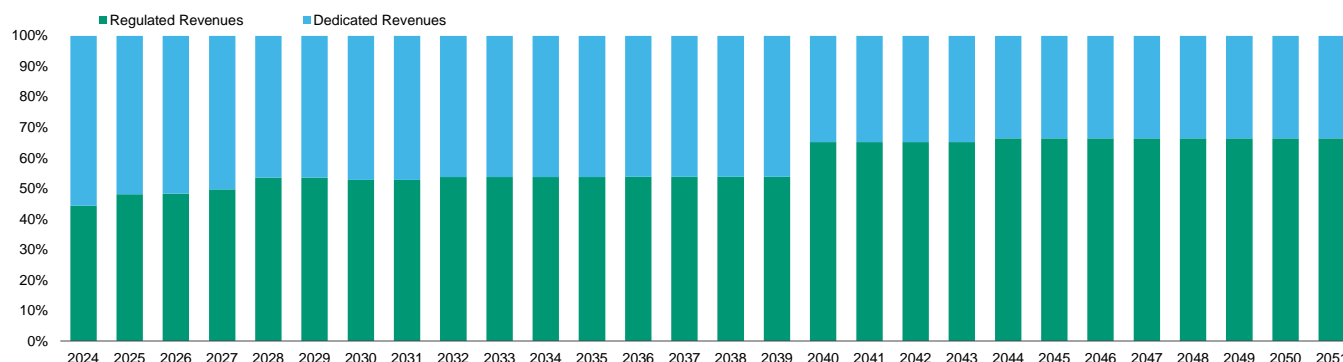
### Good visibility on long-term cash flows

Our credit view recognizes the predictability of availability-based, perpetual regulated revenues during the life of the transaction. Overall, we believe that the tariff review process is transparent and provides good predictability over regulated revenues with adequate mitigants against volatility arising from market risk.

The project will benefit from two main sources of revenues: regulated (growing from around 39% to 66% of total revenues over the life of the debt) and bilateral agreements. The proportion of unregulated revenues is anticipated to gradually decrease over time reaching around 35% of the portfolio by 2040, as a combined result of the completion of regulated expansion projects and re-classification to the national system of some unregulated contracts. Further enhancing cash flow visibility is the contracted revenue indexation mechanism that provides for monthly adjustments to reflect changes in the Chilean inflation rate and in the exchange rate CLP/USD, effectively reducing the project exposure to key market risks.

Exhibit 5

## Total revenue breakdown



Source: Alfa Transmisora de Energia S.A. and Moody's Ratings

Most of the project's unregulated revenues are contracted until 2039 and as such revenues are exposed to some repricing risk. The credit profile considers that the project is able to absorb more than 60% reduction in these contract's revenues to be in break even. Additionally, approximately 13% of the revenues relates to the network connection with Colbun's Santa María coal plant that was expected to be retired by 2040, in accordance with the Chilean's Government decarbonization goals. However, Colbun has recently announced that the main contract supporting Santa María's generation with (PPA with Codelco) has been amended. According to the amendment Colbun will gradually start supplying Codelco with renewable power instead of through the Santa María's coal-based production. Nevertheless, our credit view incorporates the contractual arrangements supporting the connection of the Santa María coal plant that will remain in place. In addition, our view considers the potential "nationalization" (i.e. incorporation to the national transmission system) of the associated transmission line due to the connection needs in the geographical area where the Santa María coal plant is located; the CNE plan of works (new sub-stations) in the area also supports the high likelihood of the incorporation of the Santa María transmission line to the national system.

**Regulated tariffs** on the other hand are paid according to a regulated return (VATT), comprising an annualized regulated return on investments costs (AVI), as well as compensation for operating costs (COMA), which is designed to make a transmission owner whole for their expenses. From January 2020 onwards, the VATT remuneration is inclusive of an adjustment for corporate income tax expense effect (AEIR). The AVI is annualized from the initial acquisition and installation costs (VI), subject to an established discount rate and useful life. From 2020 onwards, the regulatory rate of return to obtain such annuity will be in a range between 7% and 8% post-tax in USD real terms, which is lower from the previous tariff period.

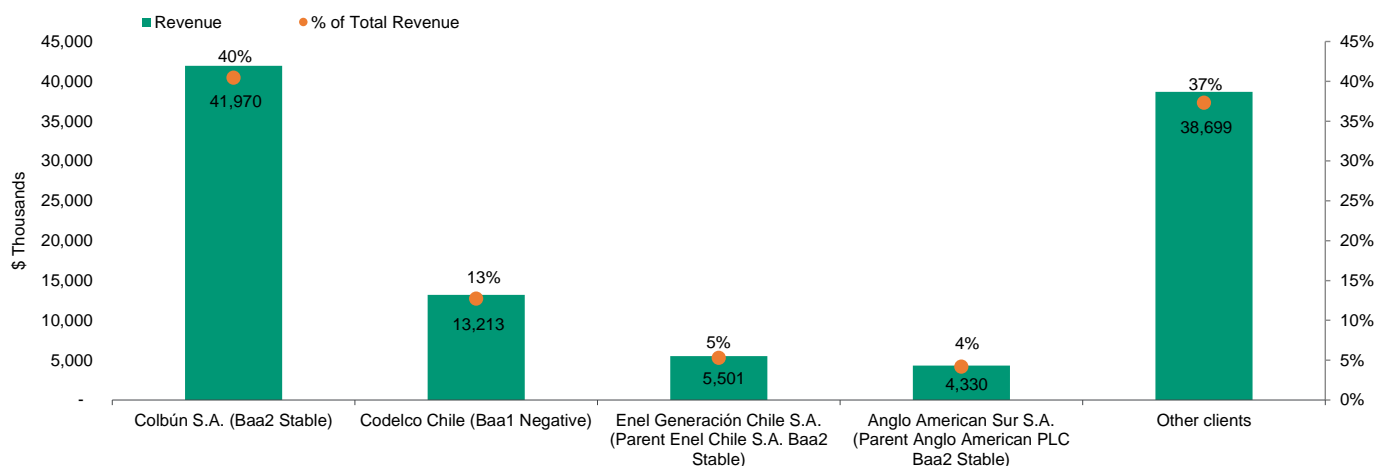
The VATT tariff is adjusted monthly, considering US and Chilean inflation, as well as exchange rate. The weight of inflation indexation factor varies between national and zonal systems and depending on the asset type. New assets are entitled to a 20 year-fixed tariff scheme ("fixed tariff period"), after which the tariff is subject to a reset every 4 years from the review. For the resettable period, the CNE and an independent panel of experts will carry studies for a revaluation assessment of the asset base component (VI) and COMA. This adds some uncertainty to cash flows on the long run, because the VI is based on the assets' value of new replacement (VNR), but always considering the same technology of the existing assets which mitigates the risks of a major technology shift in the valuation process.

### Satisfactory counterparty risk from bilateral contracts

Revenues from bilateral agreements on the other hand, are exposed to a diversified client's base. Generation plants are expected to yield 38% of the portfolio total revenues with a majority of contracts signed directly with generation plants of [Colbun S.A.](#) (Baa2 Stable). The other dedicated contracts with generation companies represent a small amount of revenues.

Exhibit 6

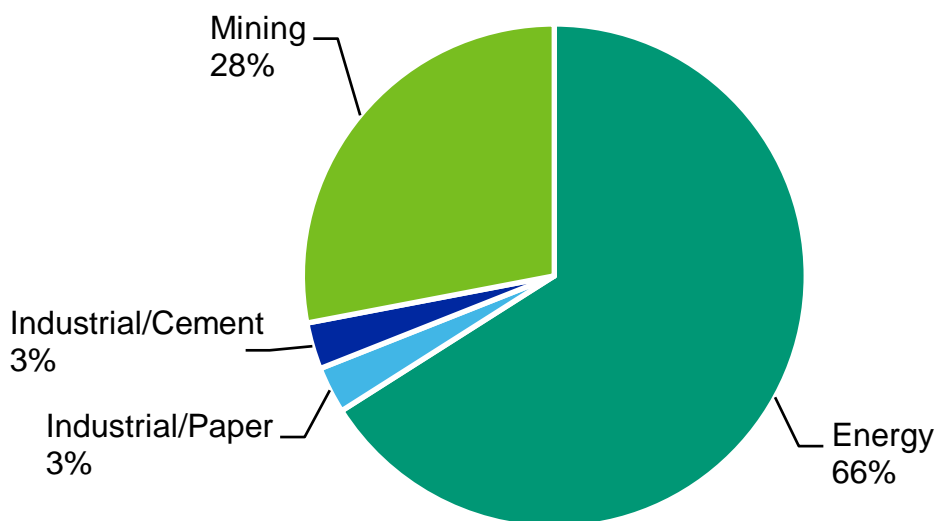
As of December 2023, the annual income of Alfa Transmisora de Energia S.A. were concentrated in a small group of main clients. % Concentration of the 4 main clients is 63%



Source: Alfa Transmisora de Energia S.A.

Exhibit 7

Revenue breakdown of unregulated assets



Source: Moody's Ratings

Colbun's generation assets are the most representative exposure within the portfolio. Pricing for these generation contracts varies, but are generally fixed and inclusive of an escalation factor to compensate for inflation. All contracts were signed for a 20 year period,

most expiring by 2038, with 5 year successive automatic renewal under the same conditions (non-renewal must be notified with a 2 year notice prior to term ending). We believe these contracts are likely to be renewed because the project's assets are responsible for connecting 92% of Colbun's total electricity generation into the system and there are no other connection alternatives to the grid.

### Latest tariff review more favorable than previously expected

The tariff for the 2020-23 regulatory period had been enacted on February 2023, resulting in a slightly higher tariff than the one published by the Comision Nacional de Energia (CNE) at the time of the asset's acquisition, resulting in slightly higher revenues for the project, leading to a minimum DSCR of 1.30x.

According to the terms of the Notes and pursuant to the sale and purchase agreement (SPA), this event triggered an upward adjustment to the purchase price for approximately \$116 million. The price adjustment was paid in April 2023 with funds provided by the sponsors. In turn, Alfa issued the equivalent to \$112 million local notes to repay the sponsor's loan.

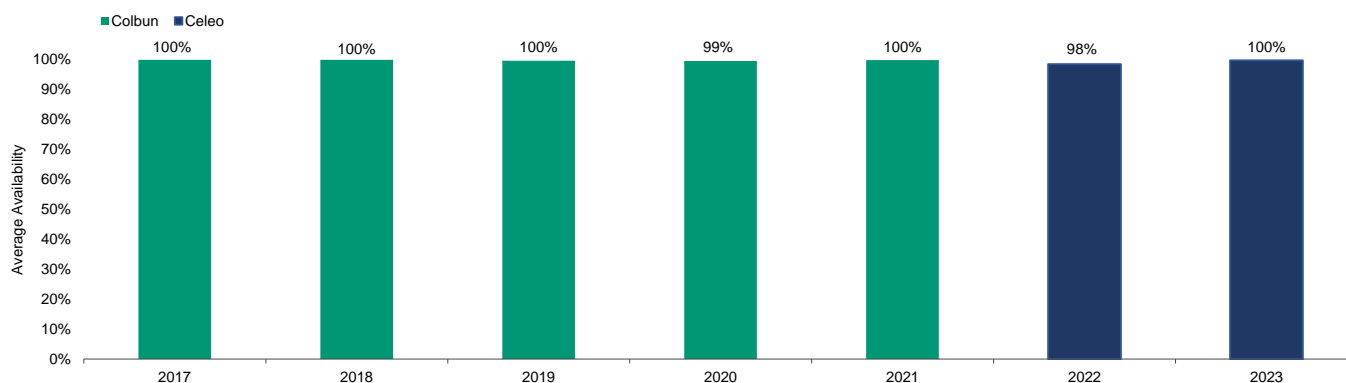
### Operating track record and high availability also support cash flow stability

The portfolio has been able to demonstrate overall high availability rates that were above 98.9% under Colbun's operations. While unavailability may lead to fines, typically they are levied only when there is a material negative impact to the system resulting from a prolonged outage event, which is rare in Chile given the network's configuration. Furthermore, the amount of penalties that may be imposed to a transmission company cannot exceed 5% of the company's annual income during the last year (equivalent to 5% of the VAT). In addition, according to the O&M contract, penalties and fines imposed by regulators for unavailability will be passed through to the operator (Celeo Redes), limited to 25% of annual O&M fee (30% could trigger an early termination).

Interim availability rates are measured by a Real Time Information System (SITR), which is calculated as the percentage of time in each month where the signals reported by a company reach the SCADA system of the CEN with a valid data mark. This system indicates if there are failures in signals equipment or in the network links. The independent engineer (IE) report indicates that the portfolio's transmission lines have performed better than the industry average in Chile, but slightly below the technical international norm on the interim data.

Exhibit 8

#### Strong historical availability of the assets



Source: Alfa Transmisora de Energia S.A.

Following the acquisition, Celeo's O&M team, an experienced operator of transmission assets in Chile, started operating the assets. The O&M agreement targets high availability rates (99.9%), has a 10-year term with automatic 5-year renewal thereafter and a fixed fee structure, indexed to Chilean CPI. We believe this agreement contains adequately experienced counterparties and incentives to maintain a very high performance of the assets.

### Leverage and debt service profile

The Baa3 rating reflects the project's high leverage yielding an average DSCR of about 1.3 times and average adjusted cash from operations to debt in the 3% to 17% range over the life of the transaction, reflecting the partially amortizing debt profile with approximately 50% of the original debt amount to be refinanced at the bonds maturity in 2051. In addition to the legal amortization



schedule, the financing contemplates a cash-sweep mechanism starting in 2043 that aims at reducing the balloon payment to 40% of the original debt amount with excess cash and therefore slightly decreasing the refinancing risk. Nonetheless, the large refinancing risk in the long term, justifies a one notch adjustment to the rating based on structural features.

The amortization schedule of the notes has been originally designed to target a minimum DSCR of 1.20x, stepping up to a minimum of 1.35x for the portion of regulated revenues subject to tariff reviews and to 1.40x for the dedicated contracts after the renewal period of those contracts (2038-2039). The break-even analysis, considering the transaction period pre-refinancing through 2051, that results in a 1.0x DSCR would need nearly a 50% reduction in the VI or 70% reduction in the pricing of renewal of unregulated contracts, which helps alleviate long-term credit concerns given the type of assets and their expected importance for the system.

### Structural considerations and liquidity

The transaction includes several of the structural features typical of a project financing as detailed below:

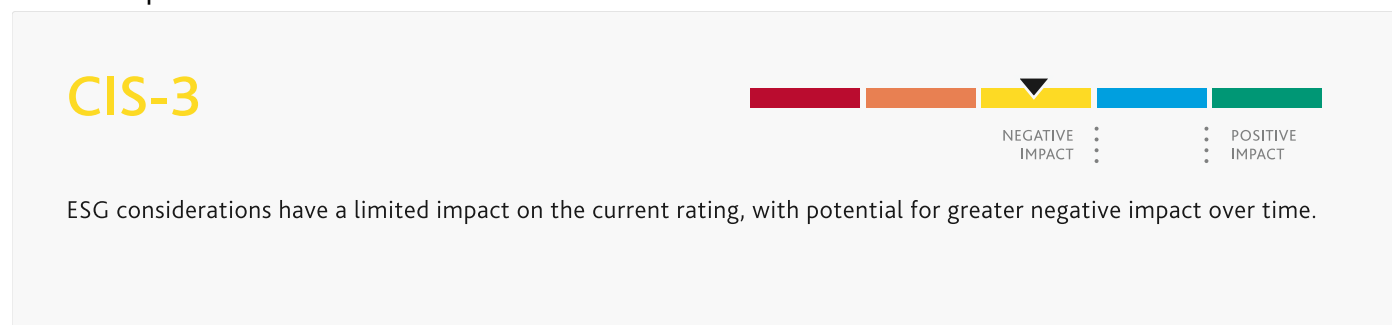
- » Six-month debt service reserve account (LC backed)
- » Three-month operating and maintenance (O&M) reserve account (LC backed)
- » Restrictions on business activities and M&A
- » Distribution test subject to DSCR of 1.15x
- » Limitations on additional indebtedness
- » Well-defined onshore and offshore cash waterfall that prioritizes the notes repayment
- » A security package that benefits senior creditors with first-priority security interest over material assets; all equity interests in the Issuer; the collection rights under all material project documents; the transmission lines, substations and all tangible assets of the Issuer; the real estate rights of the Issuer in the sites where the Substations are located (including, easements and rights of way granted by any electrical concession); the project accounts; all related party subordinated loans to the Issuer and the guarantors, which will be subject to corresponding subordination agreements.

### ESG considerations

#### Alfa Transmisora de Energia S.A.'s ESG credit impact score is CIS-3

Exhibit 9

#### ESG credit impact score

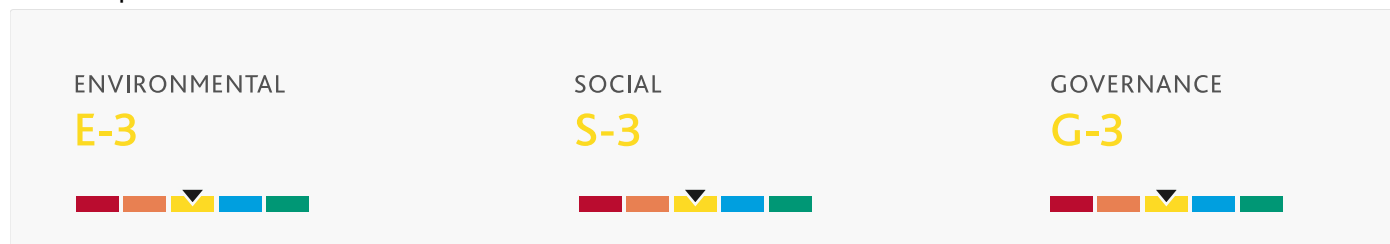


Source: Moody's Ratings

Alfa Transmisora de Energia S.A.'s **CIS-3** score, indicates that its ESG considerations have limited impact on the current credit rating with potential for greater negative impact over time.

Exhibit 10

## ESG issuer profile scores



Source: Moody's Ratings

**Environmental**

**(E-3)** Alfa Transmisora de Energia S.A.'s score is indicating exposure to physical climate risks common to transmission assets, given the increase in frequency and intensity of wildfires and natural disasters associated with climate change. As indicated by the **E-3** issuer profile score, the company's carbon transition exposure is minimal as it does not own any generation assets and its transmission assets are a significant contributor to the energy transition.

**Social**

**(S-3)** Alfa Transmisora de Energia S.A.'s reflects exposure to potential adverse regulations in Chile due to social pressures or public concern over affordability issues on regulated electricity tariffs.

**Governance**

**(G-3)** Alfa Transmisora de Energia S.A.'s financial profile is characterized by prudent financing planning and budgeting. However, the transaction involves high leverage and refinancing risk, given the partially amortizing debt schedule. The financing structure also limits changes in ownership, M&A activity or other discretionary management decisions that may influence performance and credit outcomes.

ESG Issuer Profile Scores and Credit Impact Scores for the rated entity/transaction are available on Moodys.com. In order to view the latest scores, please click [here](#) to go to the landing page for the entity/transaction on MDC and view the ESG Scores section.

## Rating methodology and scorecard factors

Moody's evaluates Alfa Transmisora de Energia S.A.'s expected financial performance under the [Generic Project Finance](#) rating methodology published June 2021. The grid indicated outcome (before notching adjustments) is Baa2; nonetheless, the large refinancing risk at maturity of the notes justifies a one notch adjustment based on structural features.

Exhibit 11

### Alfa Transmisora de Energia S.A.

#### Generic Project Finance Industry Grid [1][2]

Factor 1 : Business Risk (50%)	Measure	Moody's Forward View As of 04/17/2024 [3]
a) Market Position	A	A
b) Predictability of Net Cash Flows	Baa	Baa
<b>Factor 2 : Operating Risk (20%)</b>		
a) Technology	Aa	Aa
b) Capital Reinvestment	A	A
c) Operating Track Record	Baa	Baa
d) Operator and Sponsor experience, support, and quality	Baa	Baa
<b>Factor 3 : Leverage and Coverage (30%)</b>		
a) DSCR	Ba (1,24x)	Ba - Baa (1.3x - 1.5x)
b) Project CFO/Adjusted Debt	B (4.7%)	Ba (6%-10%)
<b>Notching Adjustments:</b>		
a) Liquidity	0	0
b) Structural Features	0	0
c) Refinancing Risk	-1	-1
d) Construction and Ramp-up Risk	0	0
e) Priority of Claim, Structural Subordination and Double Leverage	0	0
<b>Rating:</b>		
Indicated Outcome before Notching Adjustments	Baa2	Baa2
Notching Adjustments	-1	-1
Indicated Outcome before Offtaker Constraint	Baa3	Baa3
Offtaker Constraint Applied?	No	No
Level of Offtaker(s) Constraint	Baa1	Baa1
a) Indicated Outcome from Scorecard	Baa3	Baa3
b) Actual Rating Assigned	Baa3	Baa3

[1] All ratios are based on Adjusted financial data and incorporate our Global Standard Adjustments for Non-Financial Corporations.

[2] As of 04/17/2024(L).

[3] This represents Moody's forward view; not the view of the issuer; and unless noted in the text, does not incorporate significant acquisitions and divestitures.

Source: Moody's Ratings

## Ratings

Exhibit 12

Category	Moody's Rating
<b>ALFA TRANSMISORA DE ENERGIA S.A.</b>	
Outlook	Stable
Senior Secured	Baa3

Source: Moody's Ratings

© 2024 Moody's Corporation, Moody's Investors Service, Inc., Moody's Analytics, Inc. and/or their licensors and affiliates (collectively, "MOODY'S"). All rights reserved. CREDIT RATINGS ISSUED BY MOODY'S CREDIT RATINGS AFFILIATES ARE THEIR CURRENT OPINIONS OF THE RELATIVE FUTURE CREDIT RISK OF ENTITIES, CREDIT COMMITMENTS, OR DEBT OR DEBT-LIKE SECURITIES, AND MATERIALS, PRODUCTS, SERVICES AND INFORMATION PUBLISHED OR OTHERWISE MADE AVAILABLE BY MOODY'S (COLLECTIVELY, "MATERIALS") MAY INCLUDE SUCH CURRENT OPINIONS. MOODY'S DEFINES CREDIT RISK AS THE RISK THAT AN ENTITY MAY NOT MEET ITS CONTRACTUAL FINANCIAL OBLIGATIONS AS THEY COME DUE AND ANY ESTIMATED FINANCIAL LOSS IN THE EVENT OF DEFAULT OR IMPAIRMENT. SEE APPLICABLE MOODY'S RATING SYMBOLS AND DEFINITIONS PUBLICATION FOR INFORMATION ON THE TYPES OF CONTRACTUAL FINANCIAL OBLIGATIONS ADDRESSED BY MOODY'S CREDIT RATINGS. CREDIT RATINGS DO NOT ADDRESS ANY OTHER RISK, INCLUDING BUT NOT LIMITED TO: LIQUIDITY RISK, MARKET VALUE RISK, OR PRICE VOLATILITY. CREDIT RATINGS, NON-CREDIT ASSESSMENTS ("ASSESSMENTS"), AND OTHER OPINIONS INCLUDED IN MOODY'S MATERIALS ARE NOT STATEMENTS OF CURRENT OR HISTORICAL FACT. MOODY'S MATERIALS MAY ALSO INCLUDE QUANTITATIVE MODEL-BASED ESTIMATES OF CREDIT RISK AND RELATED OPINIONS OR COMMENTARY PUBLISHED BY MOODY'S ANALYTICS, INC. AND/OR ITS AFFILIATES. MOODY'S CREDIT RATINGS, ASSESSMENTS, OTHER OPINIONS AND MATERIALS DO NOT CONSTITUTE OR PROVIDE INVESTMENT OR FINANCIAL ADVICE, AND MOODY'S CREDIT RATINGS, ASSESSMENTS, OTHER OPINIONS AND MATERIALS ARE NOT AND DO NOT PROVIDE RECOMMENDATIONS TO PURCHASE, SELL, OR HOLD PARTICULAR SECURITIES. MOODY'S CREDIT RATINGS, ASSESSMENTS, OTHER OPINIONS AND MATERIALS DO NOT COMMENT ON THE SUITABILITY OF AN INVESTMENT FOR ANY PARTICULAR INVESTOR. MOODY'S ISSUES ITS CREDIT RATINGS, ASSESSMENTS AND OTHER OPINIONS AND PUBLISHES OR OTHERWISE MAKES AVAILABLE ITS MATERIALS WITH THE EXPECTATION AND UNDERSTANDING THAT EACH INVESTOR WILL, WITH DUE CARE, MAKE ITS OWN STUDY AND EVALUATION OF EACH SECURITY THAT IS UNDER CONSIDERATION FOR PURCHASE, HOLDING, OR SALE.

MOODY'S CREDIT RATINGS, ASSESSMENTS, OTHER OPINIONS, AND MATERIALS ARE NOT INTENDED FOR USE BY RETAIL INVESTORS AND IT WOULD BE RECKLESS AND INAPPROPRIATE FOR RETAIL INVESTORS TO USE MOODY'S CREDIT RATINGS, ASSESSMENTS, OTHER OPINIONS OR MATERIALS WHEN MAKING AN INVESTMENT DECISION. IF IN DOUBT YOU SHOULD CONTACT YOUR FINANCIAL OR OTHER PROFESSIONAL ADVISER.

ALL INFORMATION CONTAINED HEREIN IS PROTECTED BY LAW, INCLUDING BUT NOT LIMITED TO, COPYRIGHT LAW, AND NONE OF SUCH INFORMATION MAY BE COPIED OR OTHERWISE REPRODUCED, REPACKAGED, FURTHER TRANSMITTED, TRANSFERRED, DISSEMINATED, REDISTRIBUTED OR RESOLD, OR STORED FOR SUBSEQUENT USE FOR ANY SUCH PURPOSE, IN WHOLE OR IN PART, IN ANY FORM OR MANNER OR BY ANY MEANS WHATSOEVER, BY ANY PERSON WITHOUT MOODY'S PRIOR WRITTEN CONSENT. FOR CLARITY, NO INFORMATION CONTAINED HEREIN MAY BE USED TO DEVELOP, IMPROVE, TRAIN OR RETRAIN ANY SOFTWARE PROGRAM OR DATABASE, INCLUDING, BUT NOT LIMITED TO, FOR ANY ARTIFICIAL INTELLIGENCE, MACHINE LEARNING OR NATURAL LANGUAGE PROCESSING SOFTWARE, ALGORITHM, METHODOLOGY AND/OR MODEL.

MOODY'S CREDIT RATINGS, ASSESSMENTS, OTHER OPINIONS AND MATERIALS ARE NOT INTENDED FOR USE BY ANY PERSON AS A BENCHMARK AS THAT TERM IS DEFINED FOR REGULATORY PURPOSES AND MUST NOT BE USED IN ANY WAY THAT COULD RESULT IN THEM BEING CONSIDERED A BENCHMARK.

All information contained herein is obtained by MOODY'S from sources believed by it to be accurate and reliable. Because of the possibility of human or mechanical error as well as other factors, however, all information contained herein is provided "AS IS" without warranty of any kind. MOODY'S adopts all necessary measures so that the information it uses in assigning a credit rating is of sufficient quality and from sources MOODY'S considers to be reliable including, when appropriate, independent third-party sources. However, MOODY'S is not an auditor and cannot in every instance independently verify or validate information received in the credit rating process or in preparing its Materials.

To the extent permitted by law, MOODY'S and its directors, officers, employees, agents, representatives, licensors and suppliers disclaim liability to any person or entity for any indirect, special, consequential, or incidental losses or damages whatsoever arising from or in connection with the information contained herein or the use of or inability to use any such information, even if MOODY'S or any of its directors, officers, employees, agents, representatives, licensors or suppliers is advised in advance of the possibility of such losses or damages, including but not limited to: (a) any loss of present or prospective profits or (b) any loss or damage arising where the relevant financial instrument is not the subject of a particular credit rating assigned by MOODY'S.

To the extent permitted by law, MOODY'S and its directors, officers, employees, agents, representatives, licensors and suppliers disclaim liability for any direct or compensatory losses or damages caused to any person or entity, including but not limited to by any negligence (but excluding fraud, willful misconduct or any other type of liability that, for the avoidance of doubt, by law cannot be excluded) on the part of, or any contingency within or beyond the control of, MOODY'S or any of its directors, officers, employees, agents, representatives, licensors or suppliers, arising from or in connection with the information contained herein or the use of or inability to use any such information.

NO WARRANTY, EXPRESS OR IMPLIED, AS TO THE ACCURACY, TIMELINESS, COMPLETENESS, MERCHANTABILITY OR FITNESS FOR ANY PARTICULAR PURPOSE OF ANY CREDIT RATING, ASSESSMENT, OTHER OPINION OR INFORMATION IS GIVEN OR MADE BY MOODY'S IN ANY FORM OR MANNER WHATSOEVER.

Moody's Investors Service, Inc., a wholly-owned credit rating agency subsidiary of Moody's Corporation ("MCO"), hereby discloses that most issuers of debt securities (including corporate and municipal bonds, debentures, notes and commercial paper) and preferred stock rated by Moody's Investors Service, Inc. have, prior to assignment of any credit rating, agreed to pay to Moody's Investors Service, Inc. for credit ratings opinions and services rendered by it. MCO and Moody's Investors Service also maintain policies and procedures to address the independence of Moody's Investors Service credit ratings and credit rating processes. Information regarding certain affiliations that may exist between directors of MCO and rated entities, and between entities who hold credit ratings from Moody's Investors Service, Inc. and have also publicly reported to the SEC an ownership interest in MCO of more than 5%, is posted annually at [www.moody's.com](http://www.moody's.com) under the heading "Investor Relations — Corporate Governance — Charter Documents - Director and Shareholder Affiliation Policy."

Moody's SF Japan K.K., Moody's Local AR Agente de Calificación de Riesgo S.A., Moody's Local BR Agência de Classificação de Risco LTDA, Moody's Local MX S.A. de C.V., I.C.V., Moody's Local PE Clasificadora de Riesgo S.A., and Moody's Local PA Clasificadora de Riesgo S.A. (collectively, the "Moody's Non-NRSRO CRAs") are all indirectly wholly-owned credit rating agency subsidiaries of MCO. None of the Moody's Non-NRSRO CRAs is a Nationally Recognized Statistical Rating Organization.

Additional terms for Australia only: Any publication into Australia of this document is pursuant to the Australian Financial Services License of MOODY'S affiliate, Moody's Investors Service Pty Limited ABN 61 003 399 657AFSL 336969 and/or Moody's Analytics Australia Pty Ltd ABN 94 105 136 972 AFSL 383569 (as applicable). This document is intended to be provided only to "wholesale clients" within the meaning of section 761G of the Corporations Act 2001. By continuing to access this document from within Australia, you represent to MOODY'S that you are, or are accessing the document as a representative of, a "wholesale client" and that neither you nor the entity you represent will directly or indirectly disseminate this document or its contents to "retail clients" within the meaning of section 761G of the Corporations Act 2001. MOODY'S credit rating is an opinion as to the creditworthiness of a debt obligation of the issuer, not on the equity securities of the issuer or any form of security that is available to retail investors.

Additional terms for India only: Moody's credit ratings, Assessments, other opinions and Materials are not intended to be and shall not be relied upon or used by any users located in India in relation to securities listed or proposed to be listed on Indian stock exchanges.

Additional terms with respect to Second Party Opinions (as defined in Moody's Investors Service Rating Symbols and Definitions): Please note that a Second Party Opinion ("SPO") is not a "credit rating". The issuance of SPOs is not a regulated activity in many jurisdictions, including Singapore. JAPAN: In Japan, development and provision of SPOs fall under the category of "Ancillary Businesses", not "Credit Rating Business", and are not subject to the regulations applicable to "Credit Rating Business" under the Financial Instruments and Exchange Act of Japan and its relevant regulation. PRC: Any SPO: (1) does not constitute a PRC Green Bond Assessment as defined under any relevant PRC laws or regulations; (2) cannot be included in any registration statement, offering circular, prospectus or any other documents submitted to the PRC regulatory authorities or otherwise used to satisfy any PRC regulatory disclosure requirement; and (3) cannot be used within the PRC for any regulatory purpose or for any other purpose which is not permitted under relevant PRC laws or regulations. For the purposes of this disclaimer, "PRC" refers to the mainland of the People's Republic of China, excluding Hong Kong, Macau and Taiwan.

Contacts

Jose Aybar Critto                    +54.9.114.075.9420  
Ratings Associate  
jose.aybarcritto@moodys.com

CLIENT SERVICES

Americas	1-212-553-1653
Asia Pacific	852-3551-3077
Japan	81-3-5408-4100
EMEA	44-20-7772-5454